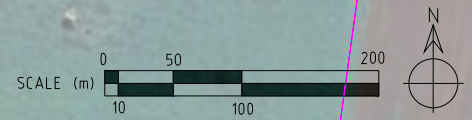


- LEGEND**
- TREE EXISTING
  - TREE FOR REMOVAL
  - LOT BOUNDARY
  - MAJOR CONTOUR
  - MINOR CONTOUR
  - SECURITY FENCE
  - LEASE BOUNDARY
  - FENCE EXISTING
  - ACCESS ROAD
  - O H 22kV POWERLINE
  - WATERCOURSE

- GENERAL NOTES**
- 1 THIS DRAWING IS INTENDED TO BE PRINTED IN COLOUR
  - 2 BACKGROUND SATELLITE IMAGERY IS INDICATIVE ONLY
  - 3 WATERCOURSE, WATERBODY DETAIL SHOWN IS OBTAINED FROM SIXMAPS, PROJECTION MGA ZONE 55
  - 4 SOLAR FARM DETAIL SHOWN IS PRELIMINARY, MAY CHANGE IN DETAILED DESIGN

GDA 2020 MGA ZONE 55  
 522 708 835m E  
 6 24°4' 267 849m'



REV	DATE	DESCRIPTION	DRWN.	DESIGNED	CHKD.	APPR.
C	2023.05.17	ADDITION OF BATTERY ENERGY STORAGE	PM	PM	JY	JY
B	2020.05.11	ISSUED WITH OSD DETAIL	JM	JM	SS	JM
A	2020.04.08	FIRST ISSUE	JM	JM	SS	JM

THIS DRAWING IS THE PROPERTY OF PROVIDENCE ASSET GROUP AND IS NOT TO BE COPIED (IN WHOLE OR IN PART) FOR ANY PURPOSE OR DISCLOSED TO OTHER PARTIES WITHOUT THE APPROVAL OF PROVIDENCE ASSET GROUP OR AN AUTHORIZED AGENT.

TITLE  
 PROVIDENCE ASSET GROUP  
 PINE RIDGE SOLAR FARM  
 GENERAL ARRANGEMENT  
 OVERVIEW  
 DWG No. 10190-G-GAD-02-1

SCALE  
 1:4000  
 REVISION  
 C  
 PAPER SIZE  
 A3



LEGEND

- TREE (EXISTING)
- TREE (FOR REMOVAL)
- LOT BOUNDARY
- MAJOR CONTOUR
- MINOR CONTOUR
- SECURITY FENCE
- FENCE (EXISTING)
- LEASE BOUNDARY (PROPOSED)
- PV TABLE
- O/H 22kV POWERLINE
- WATERCOURSE

SYSTEM SUMMARY

**ELECTRICAL CONFIGURATION:**  
 TOTAL PV PLANT CAPACITY (DC): 7.031 MWP  
 TOTAL INVERTER CAPACITY (AC): 4.95MVA  
 PV PLANT MAXIMUM EXPORT CAPACITY (AC): 4.95MW  
 DC:AC RATIO: 1.420  
 STRINGS OF 28 PV MODULES.  
 232/233 PV STRINGS PER INVERTER.  
 465 PV STRINGS TOTAL.

**PV MODULES:**  
 MFR: LONGI SOLAR  
 MODEL: LR5-72HPH-540M  
 NAMEPLATE: 540Wp  
 QUANTITY: 13,020 MODULES

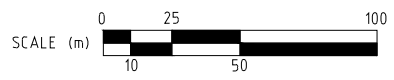
**INVERTERS:**  
 MFR: SUNGROW  
 MODEL: SG2475HV-MV  
 NAMEPLATE: 2475kVA  
 QUANTITY: 2

**MV POWER STATION:**  
 MFR: SUNGROW  
 MODEL: SG4950HV-MV  
 QUANTITY: 1

**TRACKER ARRAY:**  
 TYPE: GROUND MOUNT SINGLE AXIS TRACKING  
 CONFIGURATION: INDEPENDENT TYPE  
 RANGE OF MOTION: ±60°  
 PITCH: 6.4m  
 GCR: 35.25%  
 QUANTITY: 165 TABLES (135 LONG, 30 SHORT)

**FENCED AREA:** 136,794 m<sup>2</sup>  
**LEASE AREA:** 149,941 m<sup>2</sup>

- GENERAL NOTES:**
- SITE ACCESS VIA NEW ACCESS ROAD FROM WARGIN ROAD.
  - DETAIL SHOWN IS PRELIMINARY, MAY CHANGE IN DETAILED DESIGN.
  - CLEARANCE BETWEEN SOLAR TRACKER ARRAY & SITE SECURITY FENCE TYPICALLY 10m.
  - HV RMU & METERING (LOCATION AND TYPE TO BE DETERMINED, IS SUBJECT TO ESSENTIAL ENERGY FEEDBACK).
  - FOR SECURITY GATE DETAILS REFER TO DRAWING 10190-C-DET-02-1.
  - WATERCOURSE, WATERBODY DETAIL FROM SIXMAPS, MGA ZONE 55 PROJECTION.
  - REFER TO CIVIL DETAIL DRAWING 10190-C-DET-01-1.
- BATTERY ENERGY STORAGE DETAILS:**  
 QTY: 4. MODEL: ST12752UX-US LIQUID COOLING ENERGY STORAGE  
 BRAND: SUNGROW TOTAL CAPACITY: 11MWH  
 PCELL TYPE: LFP



REV	DATE	DESCRIPTION	DRWN.	DESIGNED	CHKD.	APPR.
C	2023.05.17	ADDITION OF BATTERY ENERGY STORAGE	PM	PM	JY	JY
B	2021.05.11	ISSUED WITH OSD DETAIL	JM	JM	SS	JM
A	2021.04.08	FIRST ISSUE	JM	JM	SS	JM

THIS DRAWING IS THE PROPERTY OF PROVIDENCE ASSET GROUP AND IS NOT TO BE COPIED (IN WHOLE OR IN PART) FOR ANY PURPOSE OR DISCLOSED TO OTHER PARTIES WITHOUT THE APPROVAL OF PROVIDENCE ASSET GROUP OR AN AUTHORIZED AGENT.

**TITLE**  
 PROVIDENCE ASSET GROUP  
 PINE RIDGE SOLAR FARM  
 GENERAL ARRANGEMENT  
 SYSTEM DETAIL

**DWG No.** 10190-G-GAD-03-1

**SCALE**  
 1:2000

**REVISION**  
 C

**PAPER SIZE**  
 A3

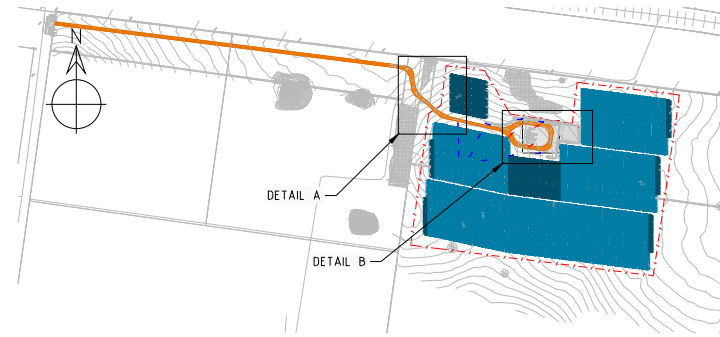


**LEGEND**

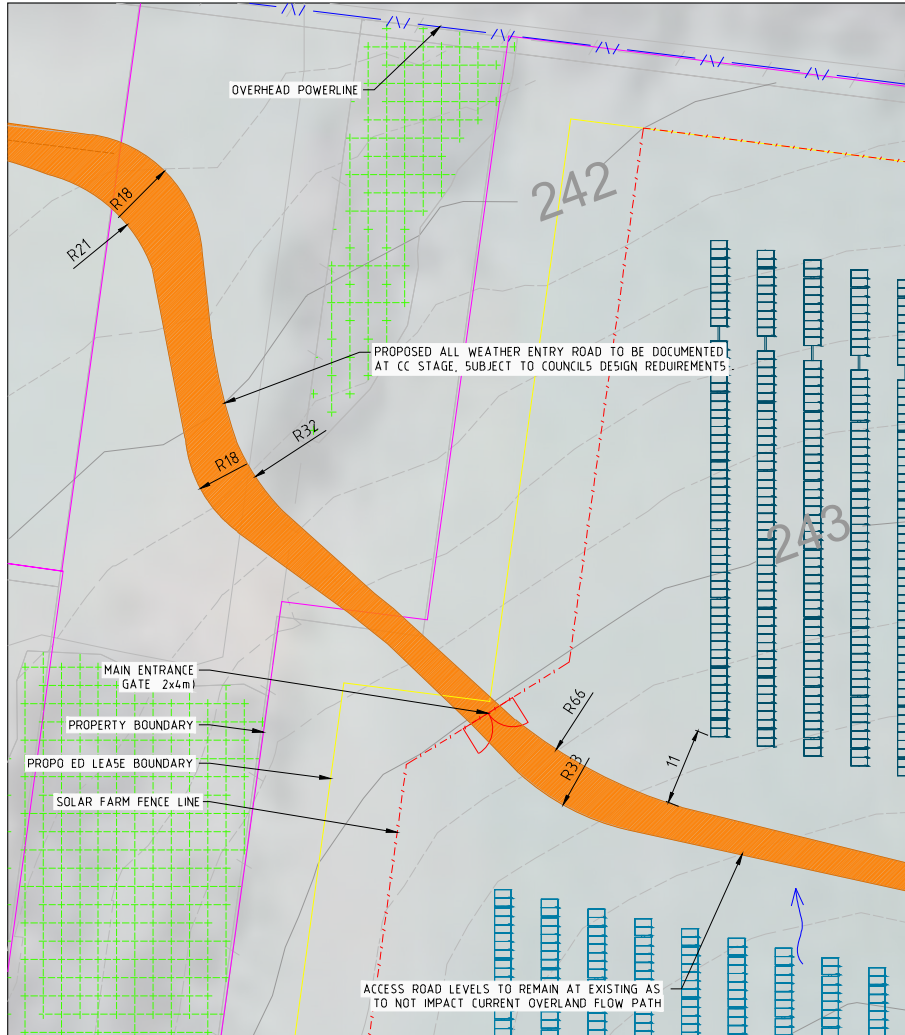
- DIRECTION OF SURFACE FLOW
- OVERLAND FLOW PATH
- 4.00 MAJOR CONTOUR
- MINOR CONTOUR

**GENERAL NOTES**

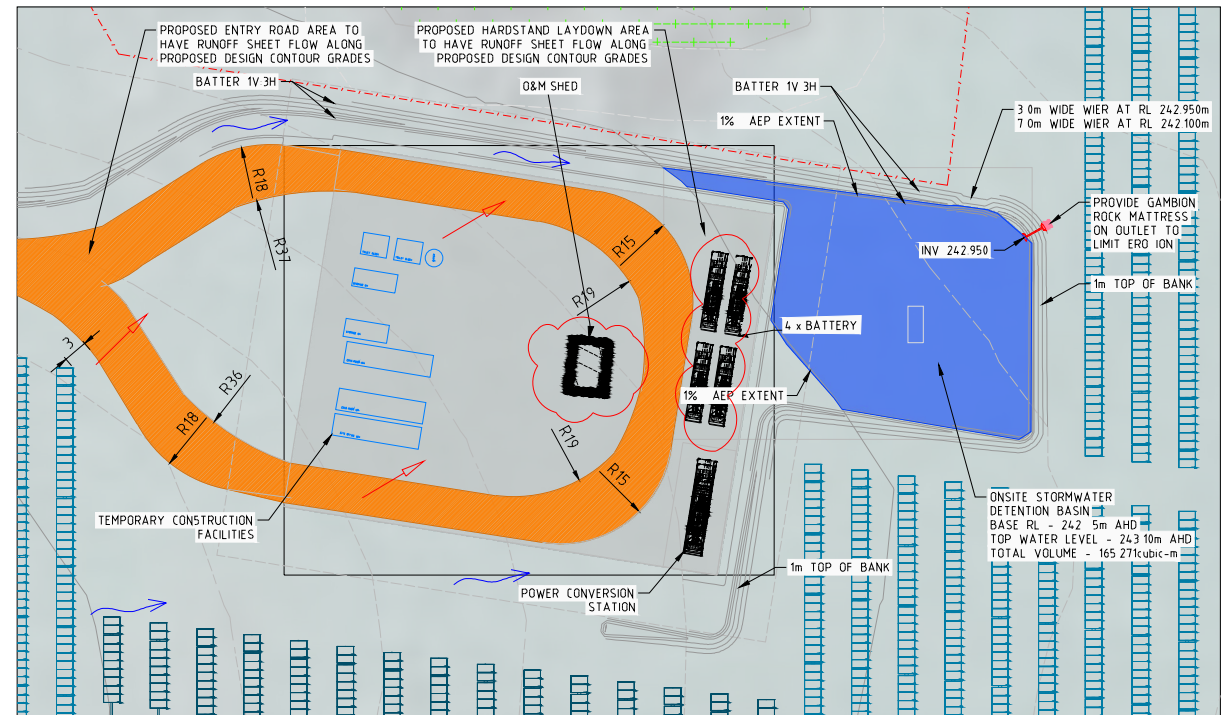
- 1 PRELIMINARY DETAIL SHOWN, MAY CHANGE IN DETAILED DESIGN
- 2 EXISTING ACCESS TRACK TO BE UPGRADED INTO TRAFFICABLE ROAD FOR B-DOUBLE.
- 3 REFER TO 10190-C-DET-02-1 FOR PRELIMINARY ROAD SECTIONAL DETAIL.
- 4 REFER TO DETAIL VIEWS FOR PRELIMINARY ON SITE STORMWATER DETENTION DETAIL.



PLAN VIEW 1:10,000



DETAIL A: SITE ENTRY (1:750)



DETAIL B: ON SITE STORMWATER DETENTION (1:750)



REV	DATE	DESCRIPTION	DRWN	DESIGNED	CHKD.	APPR.
B	2023.05.17	ADDITION OF BATTERY ENERGY STORAGE	PM	PM	JY	JY
A	2021.05.11	FIRST ISSUE	SS	SS	JM	JM

THIS DRAWING IS THE PROPERTY OF PROVIDENCE ASSET GROUP AND IS NOT TO BE COPIED (IN WHOLE OR IN PART) FOR ANY PURPOSE OR DISCLOSED TO OTHER PARTIES WITHOUT THE APPROVAL OF PROVIDENCE ASSET GROUP OR AN AUTHORIZED AGENT.

TITLE	PROVIDENCE ASSET GROUP PINE RIDGE SOLAR FARM CIVIL DETAIL	SCALE	AS SHOWN
DWG No.	10190-C-DET-01-1	REVISION	B
		PAPER SIZE	A3