

COORDINATE SCHEDULE						
MARK	MGA COORDINATES		CLASS	PU	METHOD	STATE
	EASTING	NORTHING				
PM 27240	521009.407	6246227.409	A	0-02	SCIMS	FOUND
PM 84611	520502.038	6245655.665	A	0-02	SCIMS	FOUND
SSM 139290	520555.809	6246264.647	A	0-02	SCIMS	FOUND
DATE OF SCIMS COORDINATES: 27 JUNE 2022					MGA DATUM: GDA2020	
COMBINED SCALE FACTOR: 0.999563					MGA ZONE: 55	

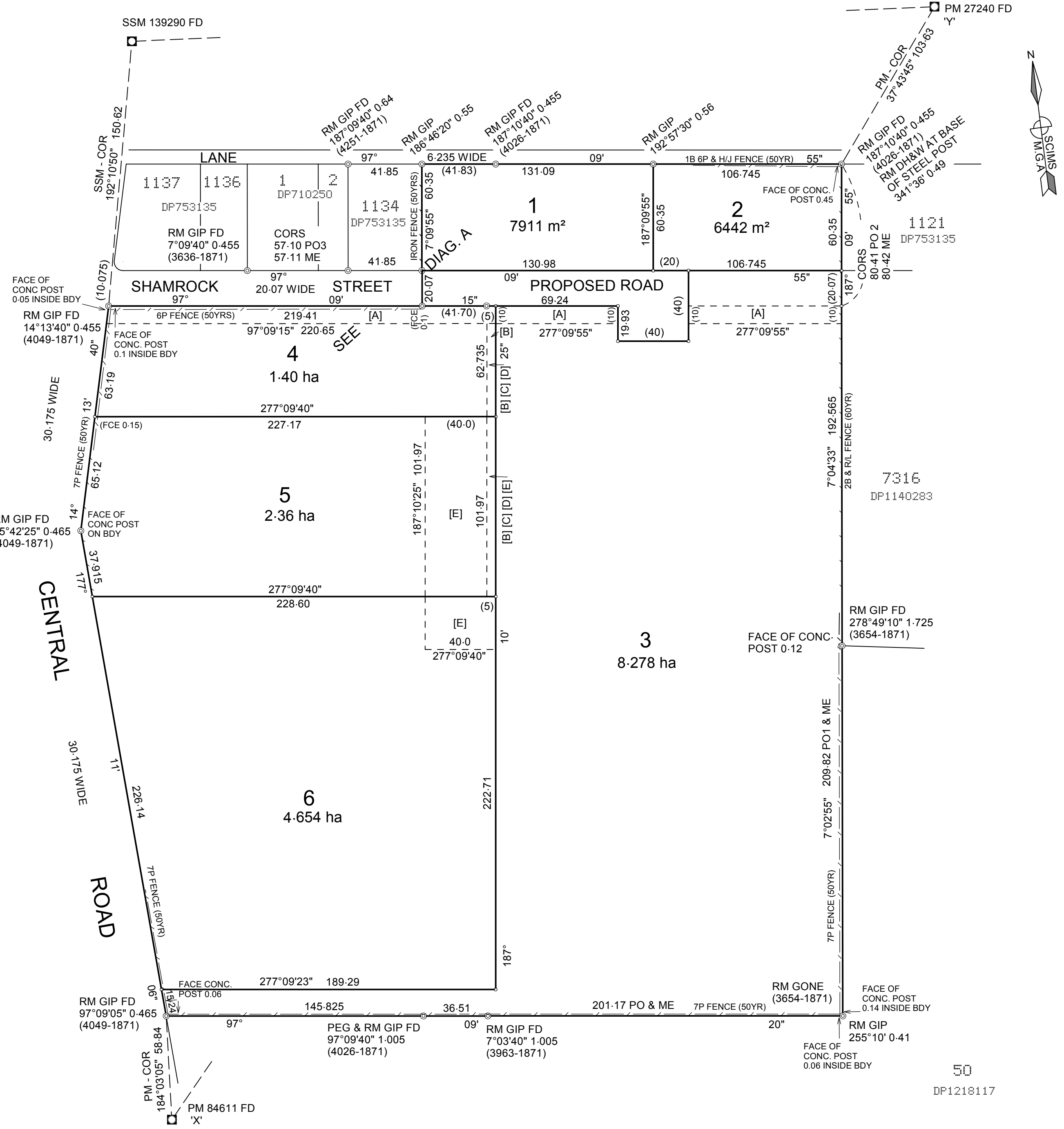
PM CONNECTIONS				
FROM	TO	BEARING	DISTANCE	METHOD
PM 84611 AZIMUTH 'X'	PM 27240 'Y'	41°35'10"	764.739	SCIMS
		41°35'10"	764.743	CORS RTK
PM 27240	SSM 139290	274°41'35"	455.323	SCIMS
		274°41'39"	455.338	CORS RTK
SSM 139290	PM 84611	185°02'45"	611.618	SCIMS
		185°02'39"	611.635	CORS RTK

GNSS VALIDATION SCHEDULE				
FROM	TO	BEARING	DISTANCE	METHOD
PM 84611	PM 27240	41°35'10"	764.739	SCIMS
		41°35'10"	764.744	GNSS STATIC

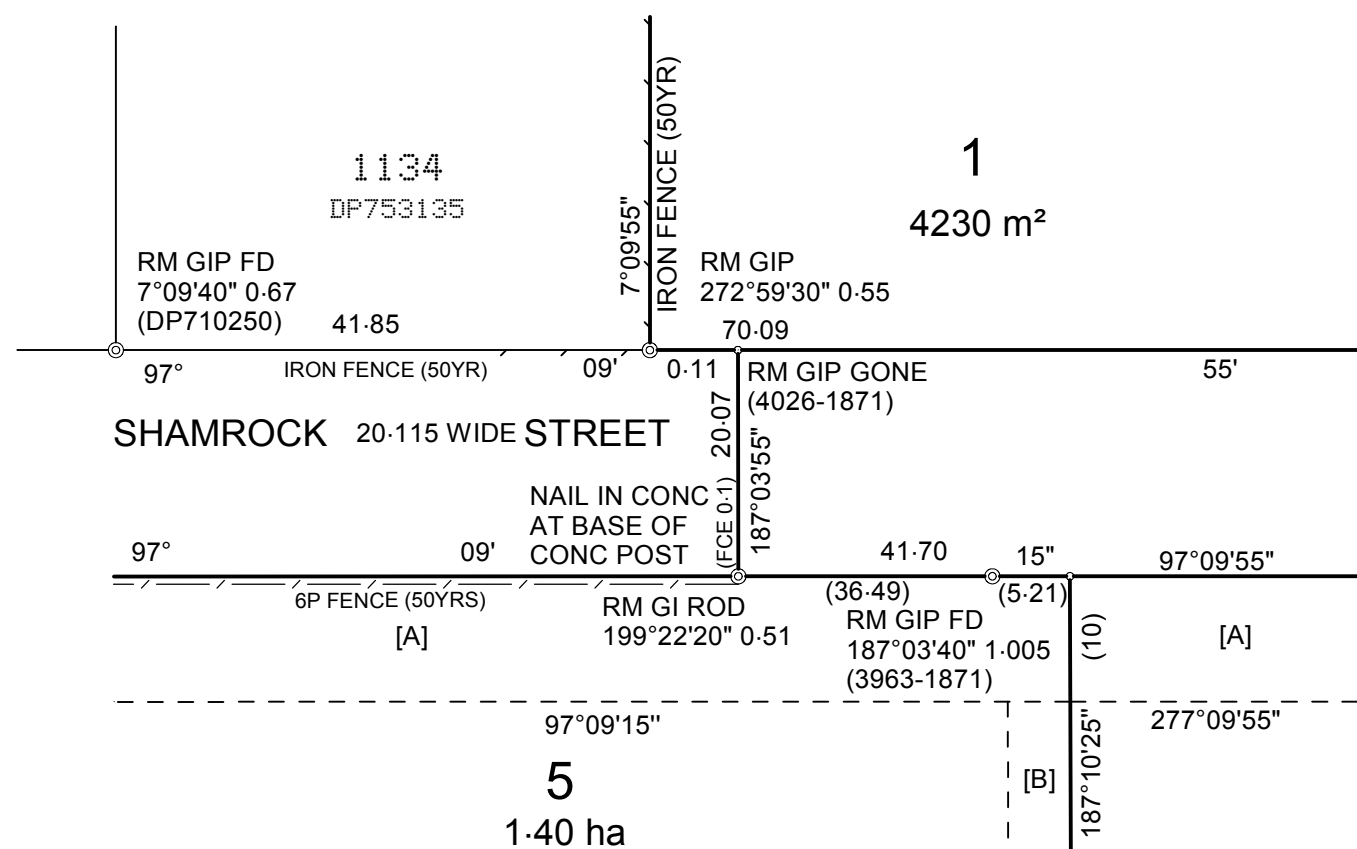
NOTE: PO REFERS TO 3963-1871
 PO1 REFERS TO 4216-1871
 PO2 REFERS TO 4026-1871
 PO3 REFERS TO DP710250

[A] EASEMENT FOR DRAINAGE OF WATER 10 WIDE
 [B] EASEMENT FOR DRAINAGE OF WATER 5 WIDE
 [C] EASEMENT FOR WATER SUPPLY 5 WIDE
 [D] EASEMENT FOR DRAINAGE OF SEWAGE 5 WIDE
 [E] RESTRICTION ON THE USE OF LAND 40 WIDE

BLAND SHIRE COUNCIL
DEVELOPMENT APPLICATION
DA2023/0065
APPROVED
23/6/2023



DIAG. A
NOT TO SCALE



DRAFT

Surveyor: ANGUS ARNDELL
 Date of Survey: 24/8/22
 Surveyor's Ref: 11509

PLAN OF SUBDIVISION OF LOTS
1133, 1233, 1243 & 1257 DP753135

LGA: BLAND
 Locality: WEST WYALONG
 Subdivision No:
 Lengths are in metres. Reduction Ratio 1:1750

Registered

DP