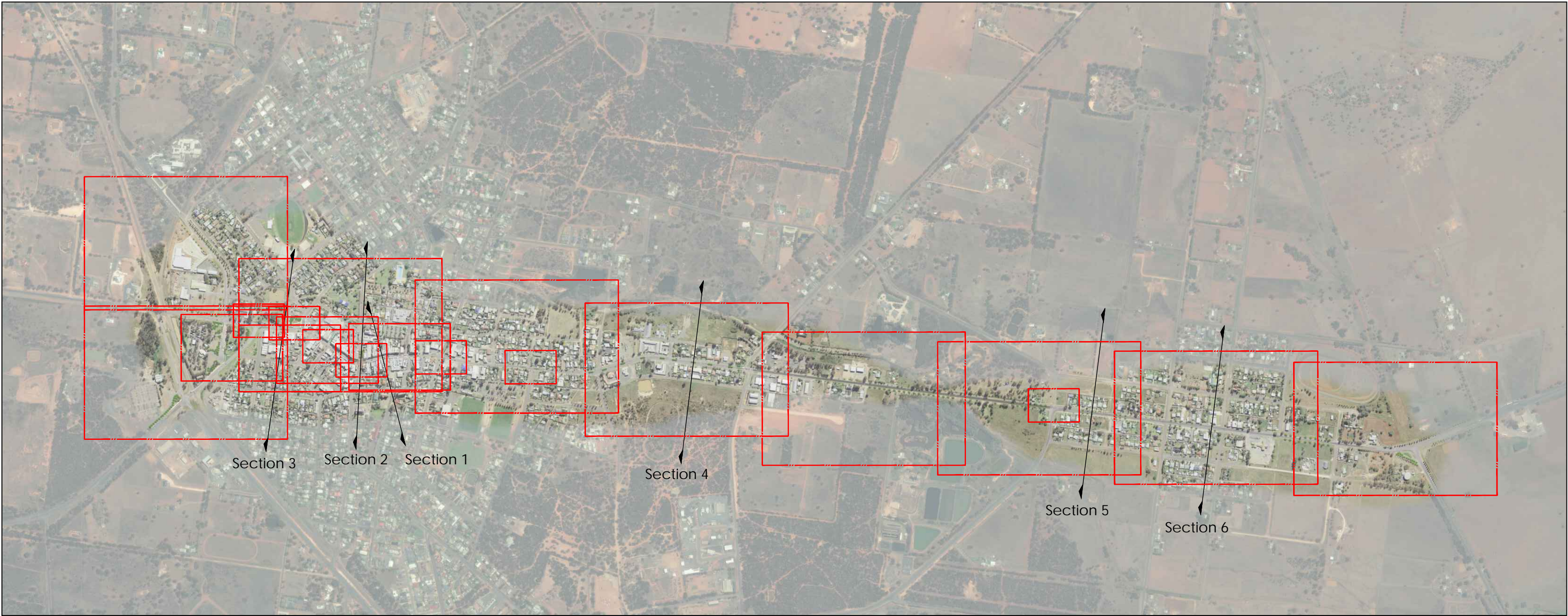


WEST WYALONG AND WYALONG MAIN STREET

SKETCH DESIGN

WEST WYALONG AND WYALONG MAIN STREET				
Master Drawing Schedule - SKETCH DESIGN				
Number	Title	Area	Revision	Date
L-000	COVER SHEET	FULL SITE	B	7/04/2025
L-001	SITEPLAN 1	-	A	4/04/2025
L-002	SITEPLAN 2	-	A	7/04/2025
L-003	SITEPLAN 3	-	B	7/04/2025
L-004	SITEPLAN 4	-	A	20/03/2025
L-005	SITEPLAN 5	-	-	24/02/2025
L-006	SITEPLAN 6	-	-	24/02/2025
L-007	SITEPLAN 7	-	B	4/04/2025
L-008	SITEPLAN 8	-	A	7/04/2025
L-009	SITEPLAN 9	-	-	24/02/2025
L-010	SITEPLAN 10	-	A	7/04/2025
L-011	SITEPLAN 11	-	B	7/04/2025
L-012	SITEPLAN 12	-	B	4/04/2025
L-013	SITEPLAN 13	-	A	7/04/2025
L-014	SITEPLAN 14	-	B	7/04/2025
L-015	SITEPLAN 15	-	-	24/02/2025
L-016	SITEPLAN 16	-	A	4/04/2025
L-017	SITEPLAN 17	-	-	24/02/2025
L-018	SITEPLAN 18	-	A	20/03/2025
L-019	SITEPLAN 19	-	-	24/02/2025
L-020	SITEPLAN 20	-	-	24/02/2025
L-021	SITEPLAN 21	-	-	20/03/2025
L-100	SECTION 1	-	-	24/02/2025
L-101	SECTION 2	-	-	24/02/2025
L-102	SECTION 3	-	-	24/02/2025
L-103	SECTION 4	-	-	24/02/2025
L-104	SECTION 5	-	-	24/02/2025
L-105	SECTION 6	-	A	4/04/2025
L-200	THOM'S CORNER INTERSECTION	-	-	24/02/2025
L-201	EASTERN ENTRANCE	-	-	24/02/2025
L-202	WESTERN ENTRANCE	-	-	24/02/2025
L-203	WHITE TANK PARK	-	A	24/02/2025
L-203A	WHITE TANK PARK ZOOM IN	-	-	24/03/2025
L-300	SOFTWARES	-	A	24/03/2025
L-301	LIGHTING	-	A	24/03/2025
L-302	HARDWORKS & FURNITURE	-	A	24/03/2025

















15.40 Provide advanced (100lts) Grevilla robusta planting

1.60 Provide new 8m high street lighting

15.50 Provide new tree pits near Compton Road

Intersection (Compton Rd and Neeld St) refer to L-021 for detailed explanation

16.40 Provide footpath either side of Neeld Street to match main street paving

16.10 Install tree pits for tree planting with WSUD with good quality soil and drainage

16.30 Provide grass planting to tree pits

16.20 Provide advanced (100ltr) tree planting of Eucalyptus sideroxylon

1.60 Provide new 8m high street lighting

1.20 Install seats at regular intervals and at key nodes

1.30 Install garbage bins at regular intervals and at key nodes



16.40 Provide footpath either side of Neeld Street to match main street paving

1.50 Provide new 6m high street lighting

17.10 Install tree pits for tree planting with WSUD with good quality soil and drainage

17.20 Provide grass planting to tree pits

17.30 Provide advanced (100ltr) tree planting of *Fraxinus pennsylvanica* 'Urbanite'

17.40 Provide footpath either side of Neeld Street to match main street paving

17.50 Provide planted blisters to reduce crossing distance on unprotected roadway either side of pedestrian refuge

1.20 Install seats at regular intervals and at key nodes

1.30 Install garbage bins at regular intervals and at key nodes

1.50 Provide new 6m high street lighting

18.10 Provide advance (100ltr) *Grevillia robusta* planting











L-013

L-014

1.50 Provide new 6m high street lighting

Lions Park refer to L-010 for detailed explanation

7.10 Install new traffic blisters and line marking to achieve intersection improvements

7.30 Provide concrete kerb/WSUD kerb traffic blisters for planting

7.20 Provide planting beds within traffic blisters, with irrigation and shrubs



- 5.3 Provide public toilet (Exeloo or similar)
- 5.10 Provide picnic table and seats
- 5.9 Provide 4m x 4m picnic shelter
- 5.1 Provide advanced (100ltr) tree planting
- 5.2 Provide information kiosks
- 5.7 Provide interpretive map inlay on concrete pavement
- 5.8 Provide Sportspersons Walk of Frame
- 5.4 Provide concrete paving
- 5.6 Provide irrigated turf under trees
- 5.5 Provide irrigated garden beds

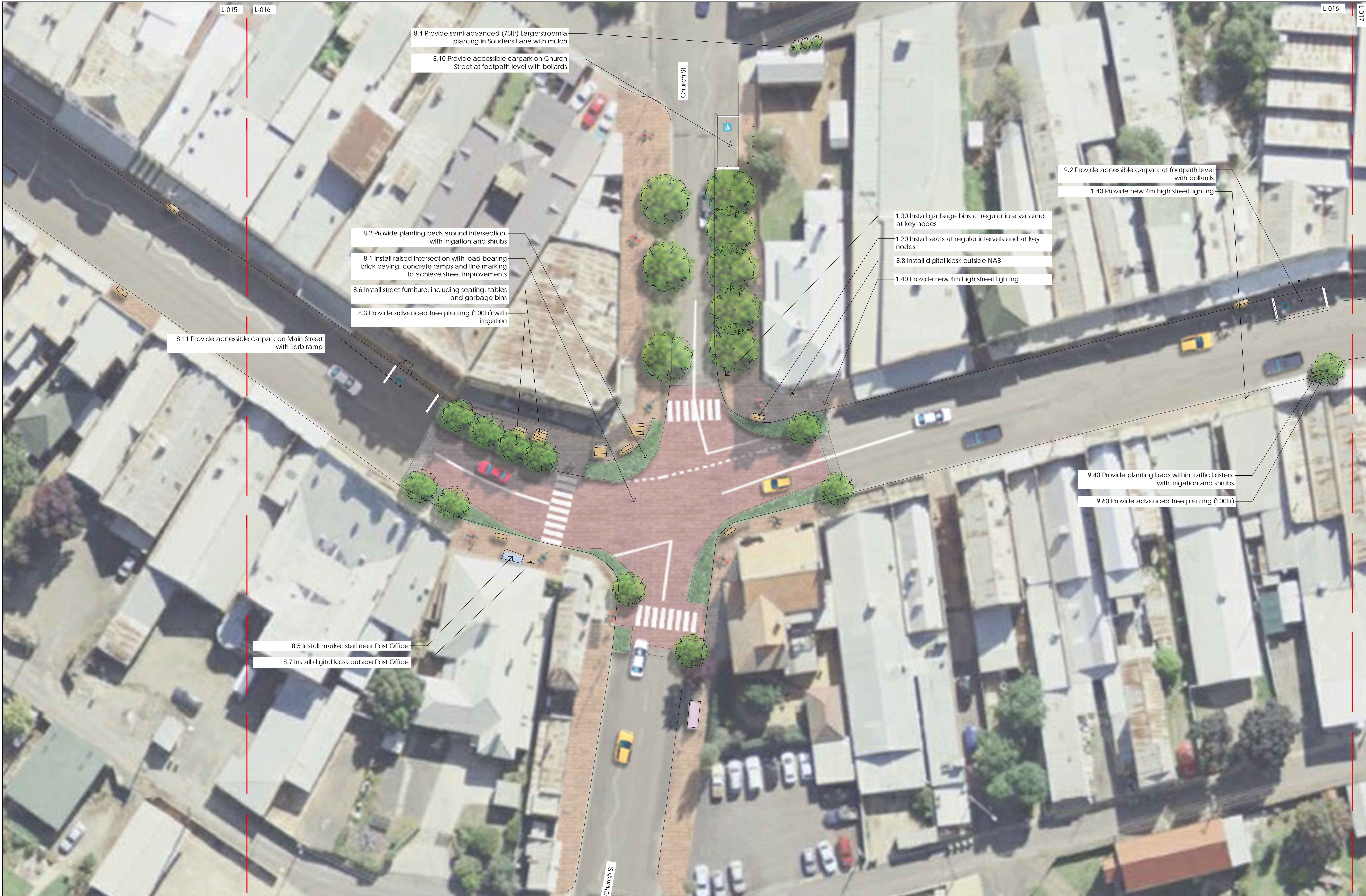
- 1.20 Install seats at regular intervals and at key nodes
- 1.30 Install garbage bins at regular intervals and at key nodes

- 7.30 Provide concrete kerb/WSUD kerb traffic blisters for planting
- 7.40 Provide advanced tree planting (100ltr)
- 7.20 Provide planting beds within traffic blisters, with irrigation and shrubs
- 7.10 Install new traffic blisters and line marking to achieve intersection improvements

- 1.10 Replace existing footpaths with new, consistent brick pavers
- 1.50 Provide new 6m high street lighting









L-016

L-017

L-017

L-018

Monash St

Main St

- 9.70 Install market stall near Supermarket
- 9.30 Provide wombat crossing with load bearing brick paving and concrete ramps
- 1.20 Install seats at regular intervals and at key nodes
- 1.30 Install garbage bins at regular intervals and at key nodes

- 9.40 Provide planting beds within traffic blisters, with irrigation and shrubs
- 9.10 Install new traffic blisters and line marking to achieve street improvements, include WSUD kerbs

- 9.50 Remove driveway concrete to provide tree planting on Main St
- 9.60 Provide advanced tree planting (100ltr)
- 1.40 Provide new 4m high street lighting



L-016

L-017

L-017

L-018

Monash St

Main St

- 9.70 Install market stall near Supermarket
- 9.30 Provide wombat crossing with load bearing brick paving and concrete ramps
- 1.20 Install seats at regular intervals and at key nodes
- 1.30 Install garbage bins at regular intervals and at key nodes

- 9.40 Provide planting beds within traffic blisters, with irrigation and shrubs
- 9.10 Install new traffic blisters and line marking to achieve street improvements, include WSUD kerbs

- 9.50 Remove driveway concrete to provide tree planting on Main St
- 9.60 Provide advanced tree planting (100ltr)
- 1.40 Provide new 4m high street lighting



L-017 L-018

Main St

Operator St

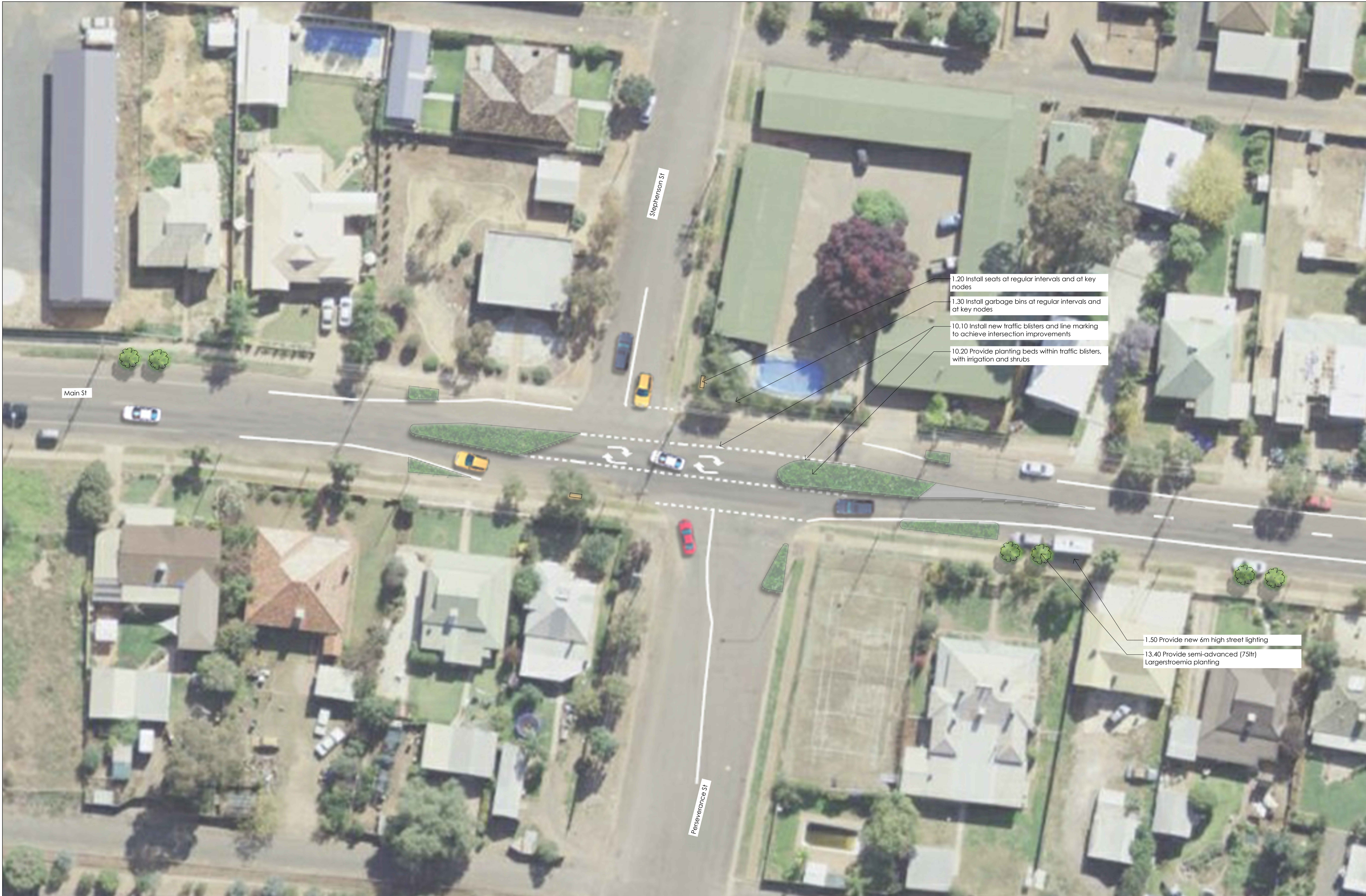
Operator St

10.10 Install new traffic blisters and line marking to achieve intersection improvements

9.60 Provide advanced tree planting (100ltr)

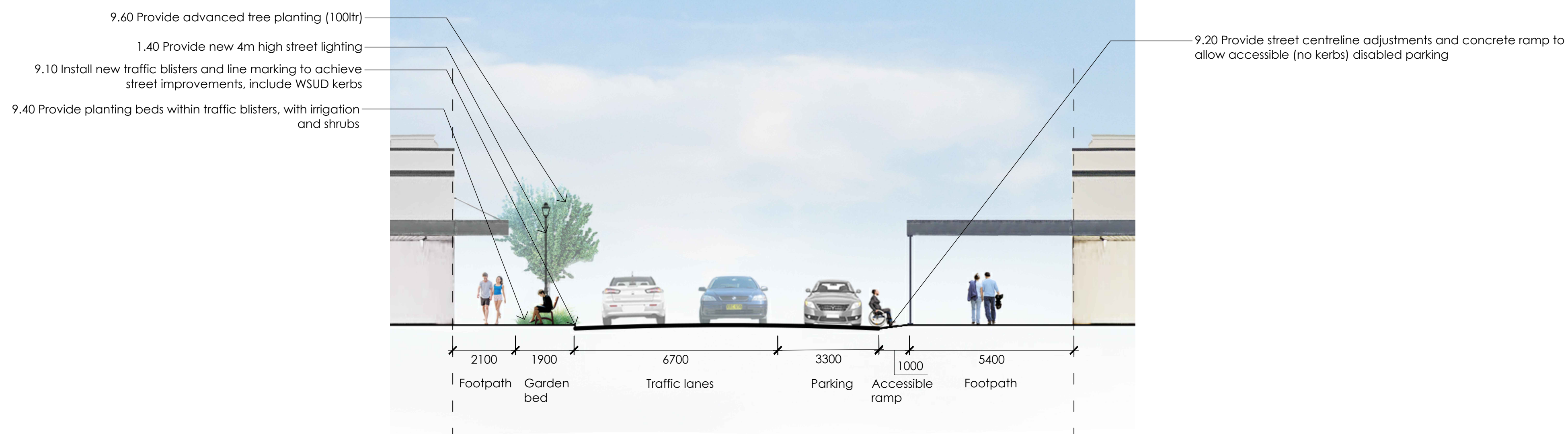
1.20 Install seats at regular intervals and at key nodes
1.30 Install garbage bins at regular intervals and at key nodes
1.50 Provide new 6m high street lighting

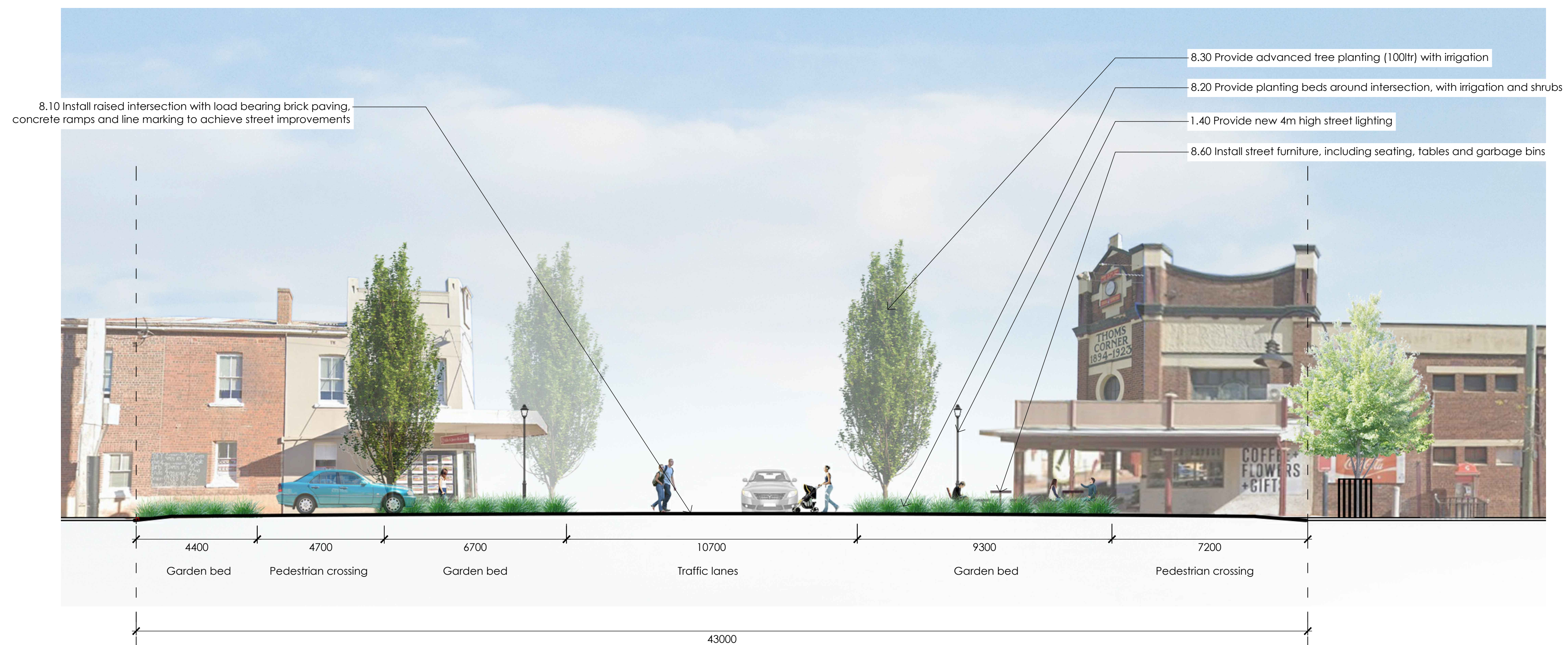
10.50 Kerb for garden bed
10.20 Provide planting beds within traffic blisters, with irrigation and shrubs
10.40 Provide concrete filled traffic blisters
10.30 Provide advanced tree planting (100ltr)

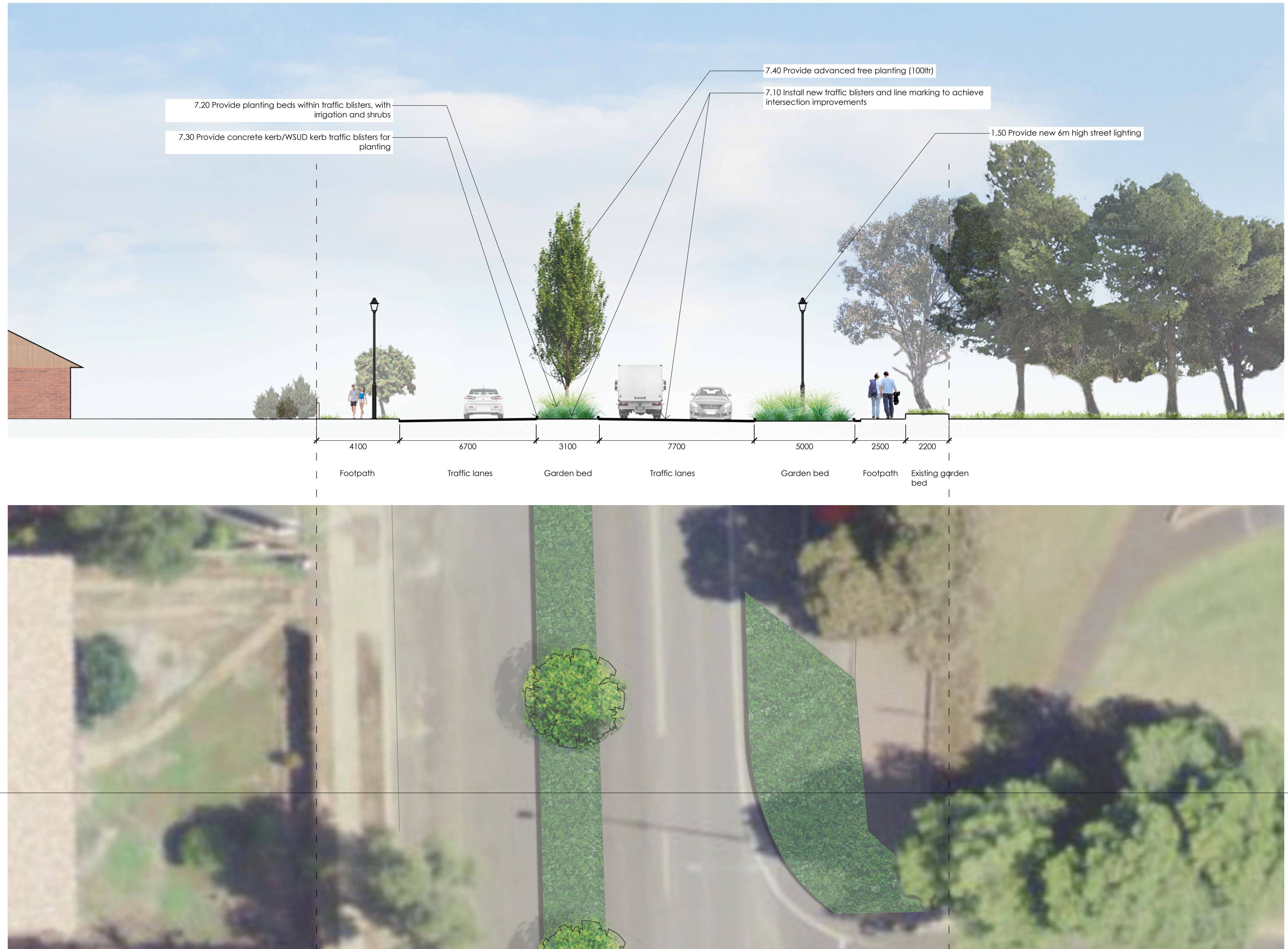


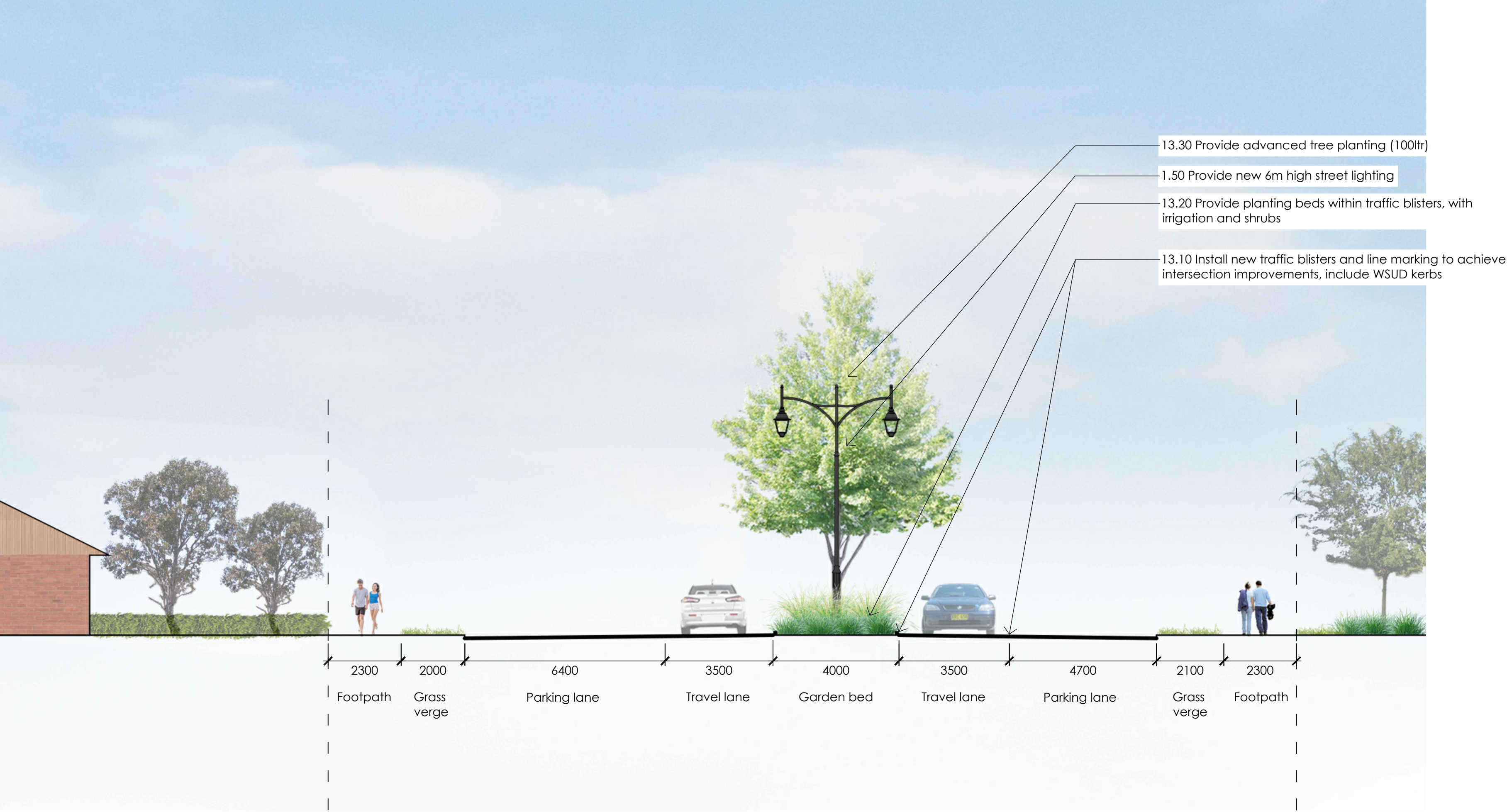


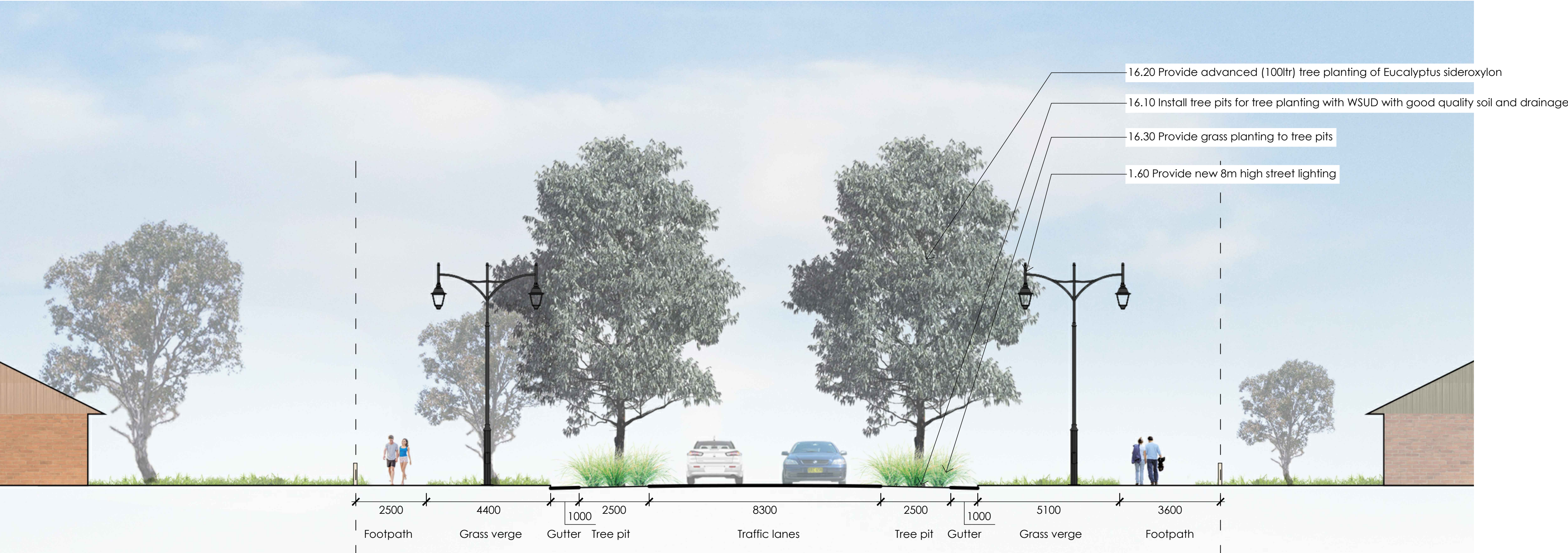


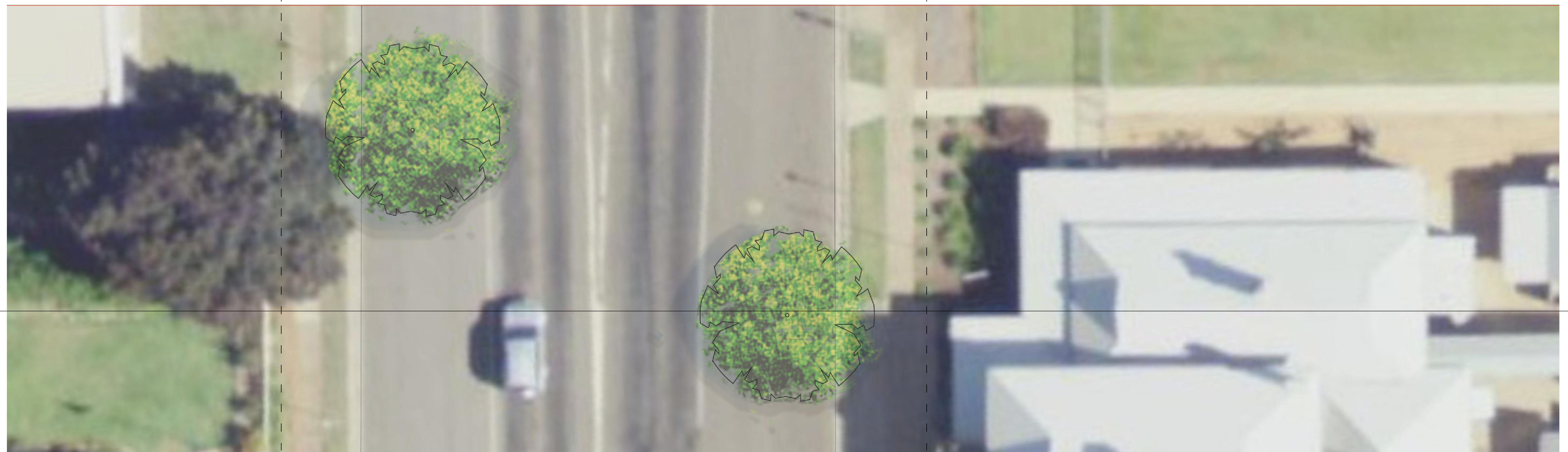
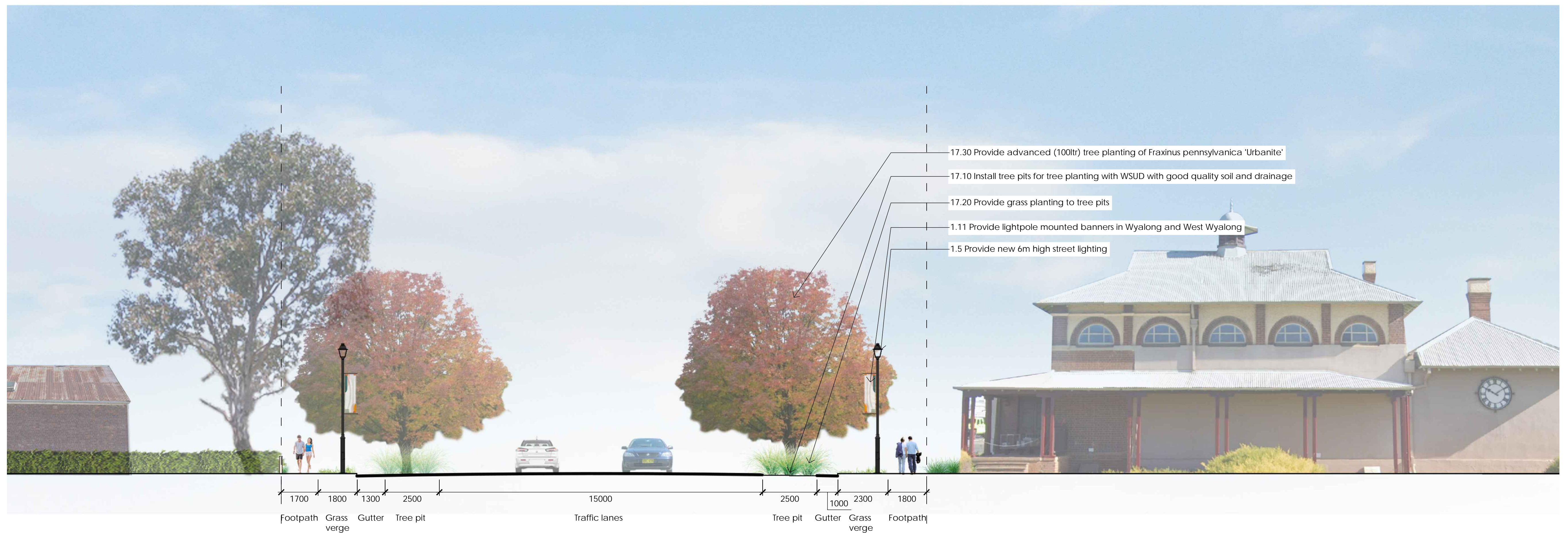














Existing image



Photo realistic artist's impression

- 8.30 Provide advanced tree planting (100ltr) with irrigation
- 1.40 Provide new 4m high street lighting
- 8.20 Provide planting beds around intersection, with irrigation and shrubs
- 8.10 Install raised intersection with load bearing brick paving, concrete ramps and line marking to achieve street improvements



Existing image



Photo realistic artist's impression



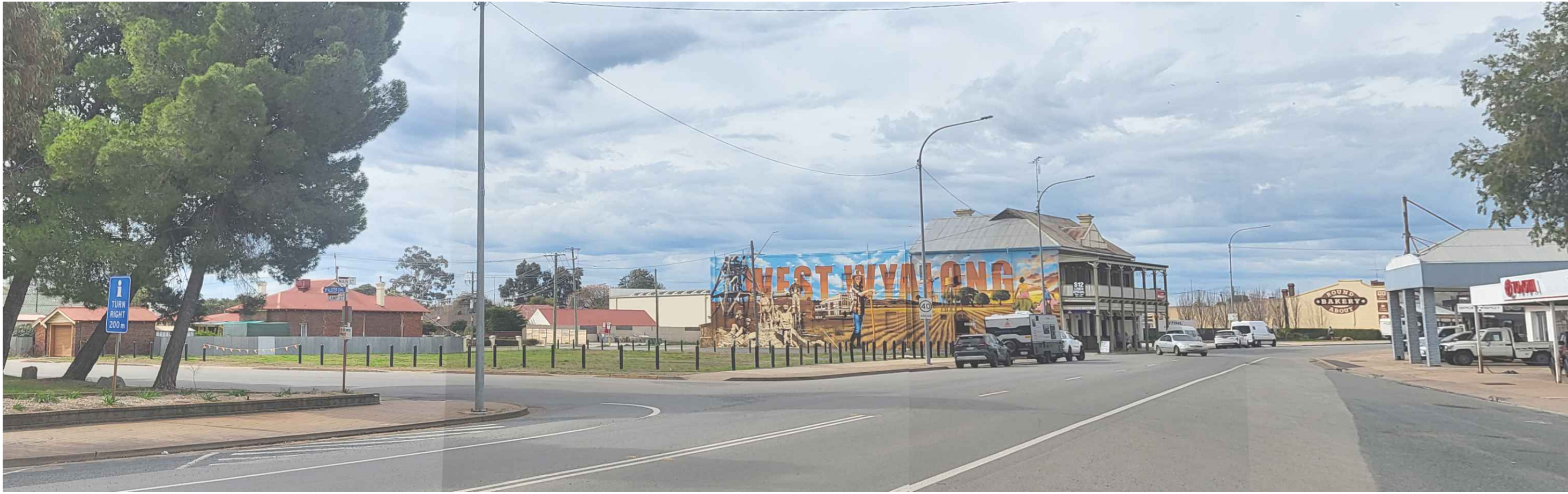
Existing image

- 4.50 Provide advanced palm planting, min 3m tall
- 4.30 Provide irrigated mass planting areas to delineate park edge and to enhance entrance to town
- 4.40 Provide advanced (100ltr) tree planting

4.40 Provide advanced (100ltr) tree planting



Photo realistic artist's impression



Existing image

- 5.10 Provide advanced (100ltr) tree planting
- 5.70 Provide interpretive map inlay on concrete pavement
- 5.40 Provide concrete paving
- 5.20 Provide information kiosks
- 5.60 Provide irrigated turf under trees
- 5.30 Provide public toilet (Exeloo or similar)



Photo realistic artist's impression

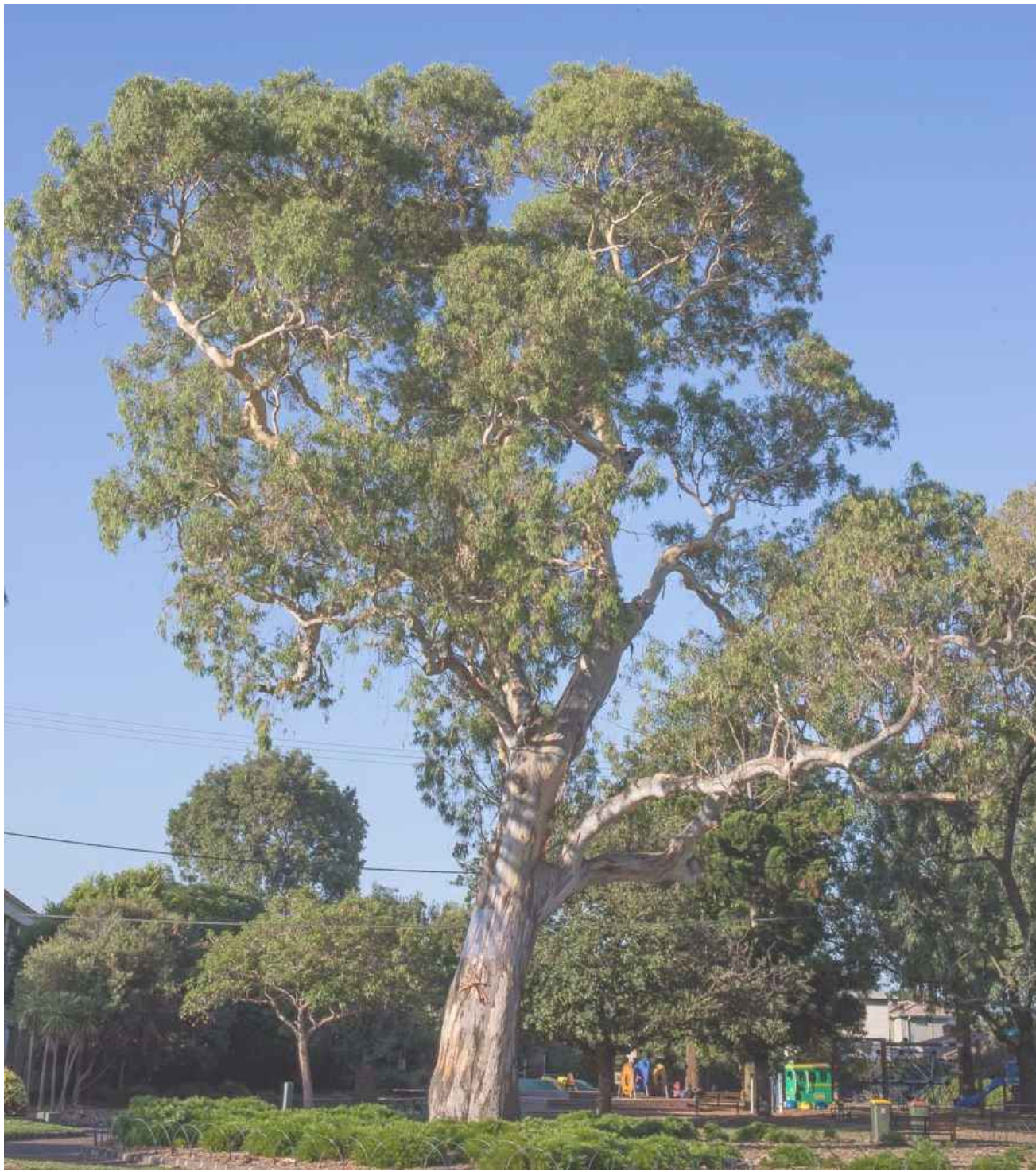
- 5.50 Provide irrigated garden beds
- 7.10 Install new traffic blisters and line marking to achieve intersection improvements
- 7.20 Provide planting beds within traffic blisters, with irrigation and shrubs
- 7.30 Provide concrete kerb/WSUD kerb traffic blisters for planting
- 1.50 Provide new 6m high street lighting



Existing image



Photo realistic artist's impression



Eucalyptus camaldulensis



Eucalyptus microcarpa



Eucalyptus sideroxylon



Grevillea robusta



Washingtonia robusta



Acer buergerianum



Corymbia ficifolia



Fraxinus pennsylvanica 'Urbanite'



Space Downunder - Kerb SPACE Inlet



Space Downunder - Trench Model T275L



Callistemon viminalis 'Slim'



Casuarina cunninghamiana



Lagerstroemia indica



Pistacia chinensis



WSUD kerb



Pot plant



Christmas box lights 1



Pole Christmas decorations 1



Thorn lighting EP445



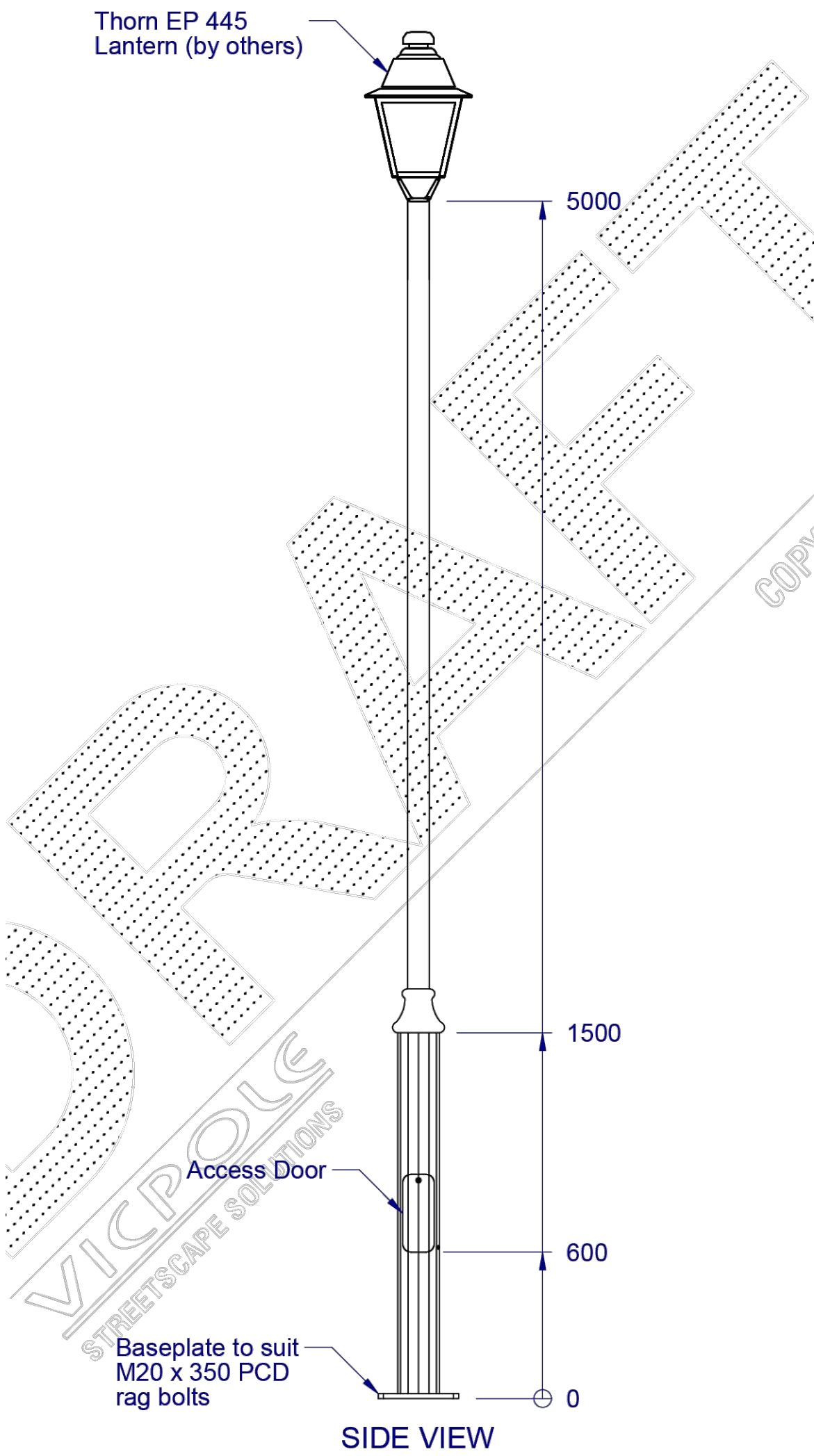
Christmas box lights 2



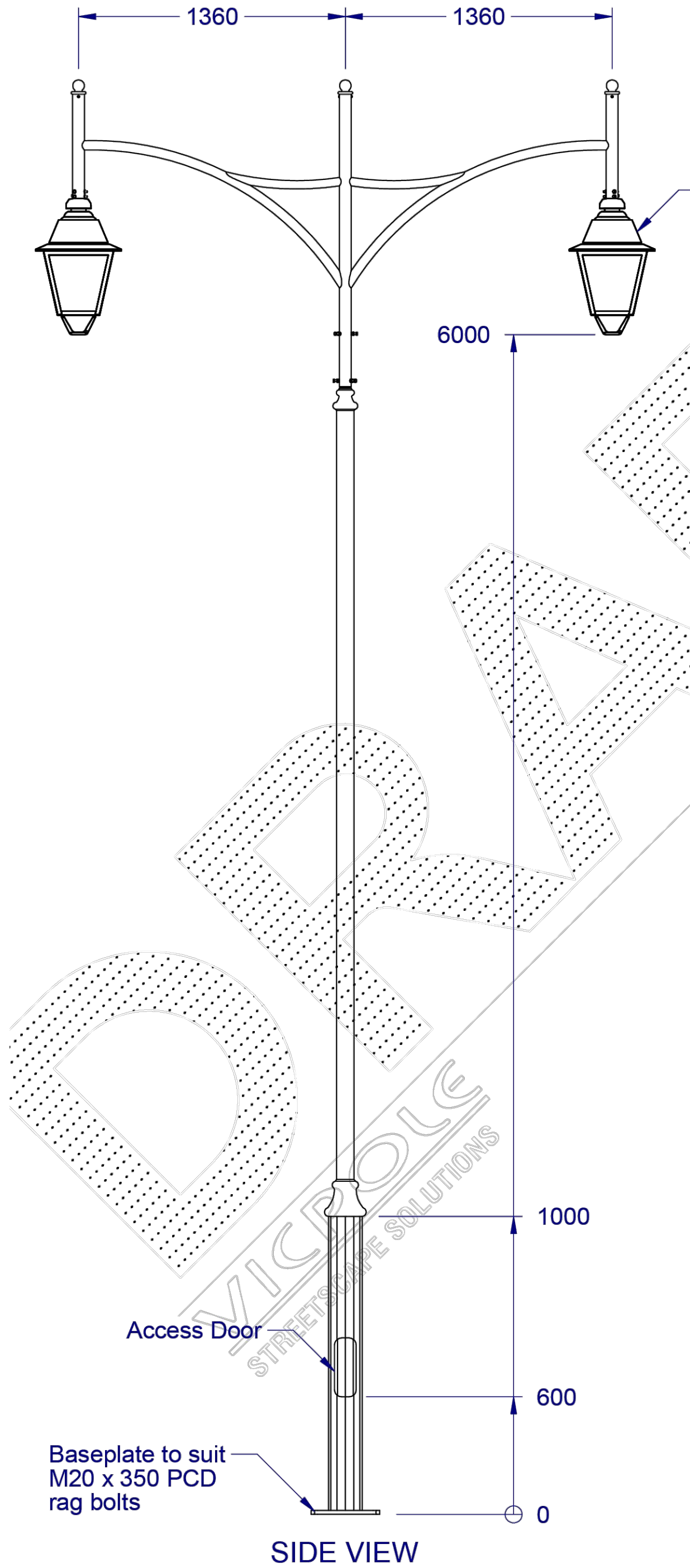
Pole Christmas decorations 2



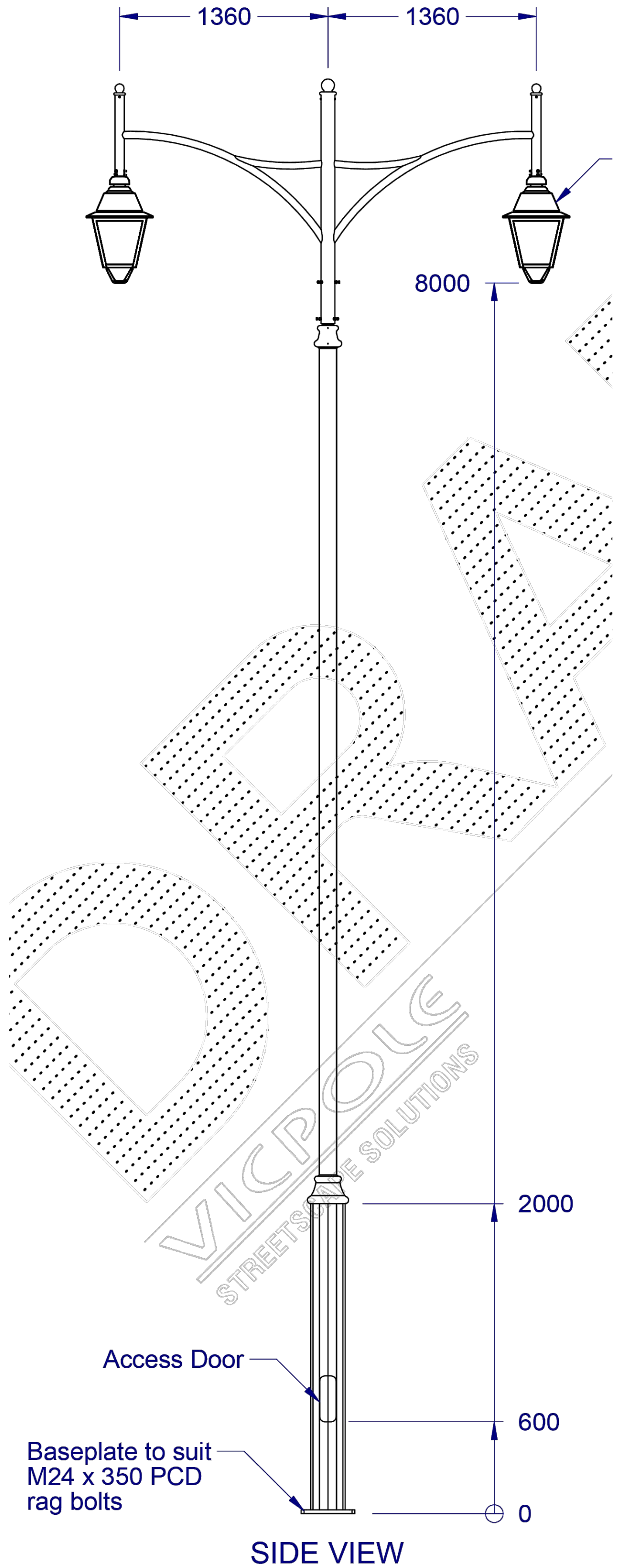
Christmas box lights 3



4m lighting illustration from Zumtobel



6m lighting illustration from Zumtobel



8m lighting illustration from Zumtobel



Bin example from Furphy Foundry - Avenue Litter & Recycling Receptacle



Bin example from Furphy Foundry - Axis Litter Receptacle



Seat example from Furphy Foundry - Foreshore Seat



Seat example from Furphy Foundry - Premier Seat



Digital noticeboard from Touchscreen Solutions



Information kiosk example



Cafe kiosk example



Cafe kiosk example



Exeloo



Brickworks, Bowral Bricks - London Regency Grey



Bluestone paving